



3rd. Quarter 2001 Results

November 14, 2001

HIGHLIGHTS

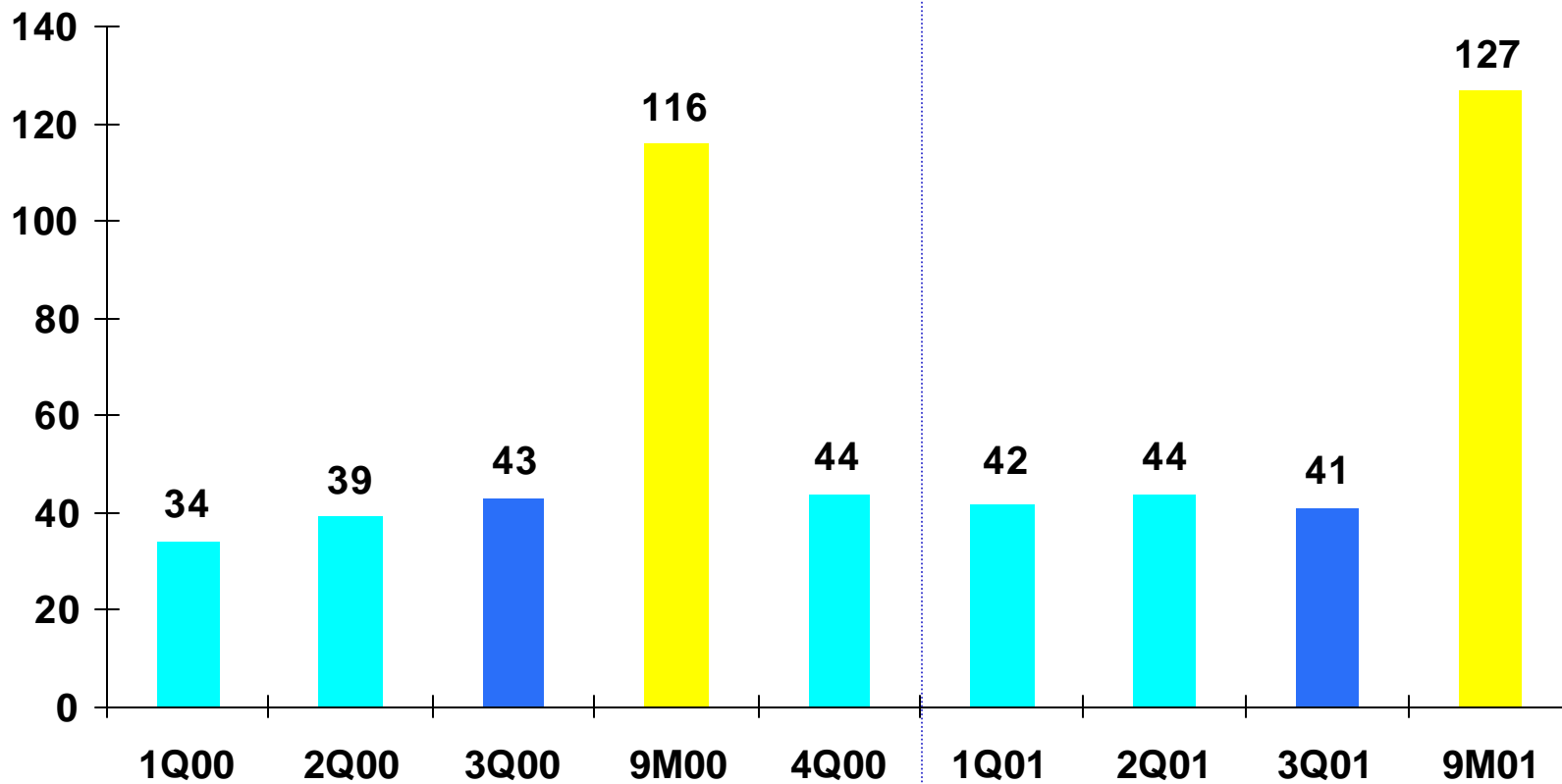


- Deliveries of 41 jets of the ERJ 135/140/145 family during the third quarter, including the delivery of 13 aircraft after September 11.
- The first ERJ 140 aircraft was delivered on July 12, 2001.
- On August 8, 2001 the Brazilian Air Force (FAB) placed 76 firm orders and 23 options for ALX aircraft.
- On August 13, 2001, Midwest signed a contract to purchase 20 ERJ 140 jets and 20 options for the same aircraft.
- The government of the Dominican Republic ordered 10 Super Tucano aircraft on August 20, 2001.

HIGHLIGHTS

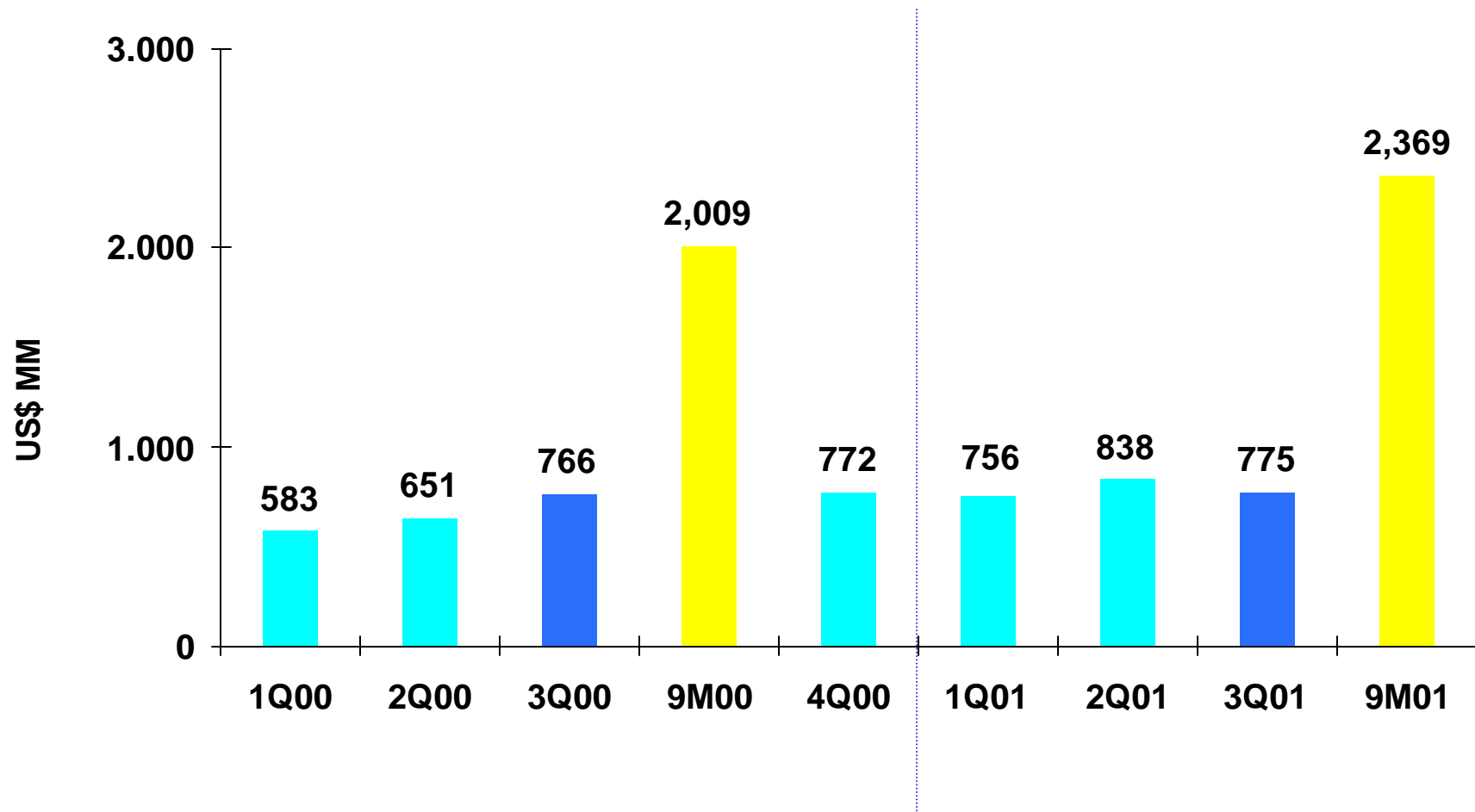
- A contract to supply one Legacy was signed on August 22, 2001 with the government of Greece.
- As a result of the terrorist attacks in the United States on September 11, Embraer announced certain adjustments to its production and a staff reduction of 1,800 employees, in order to adapt to the new worldwide economic situation and maintain its healthy economic and financial situation, as well as preserving the company's technological and industrial capabilities.
- Backlog totaled US\$ 23.9 billion, of which US\$ 11.2 billion were firm orders and US\$ 12.7 billion were options.
- Embraer is the largest Brazilian exporter, with US\$2.3 billion in exports and a net contribution to the Brazilian trade balance of US\$ 750 million

Jet Deliveries



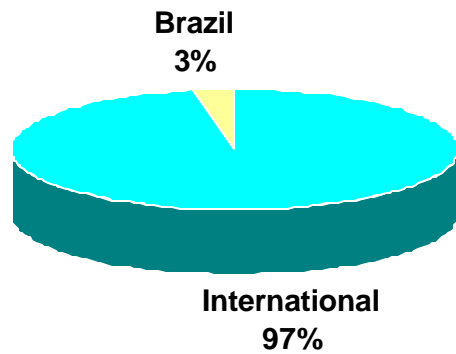
Net Revenue

US\$ Million – Corporate Law

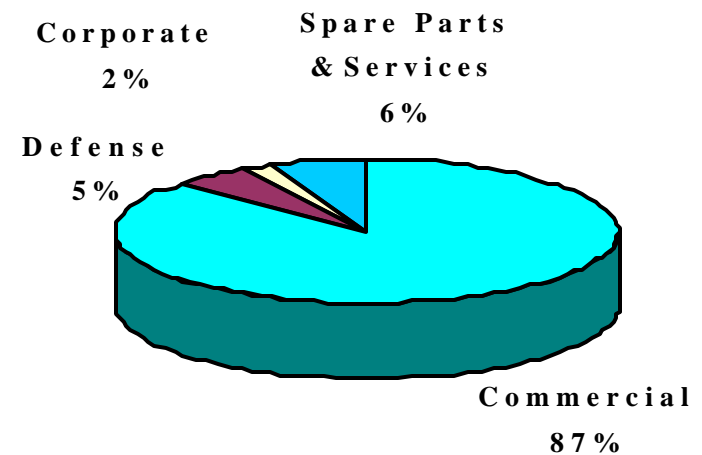


Revenue Breakdown – September 2001

Revenue by Market

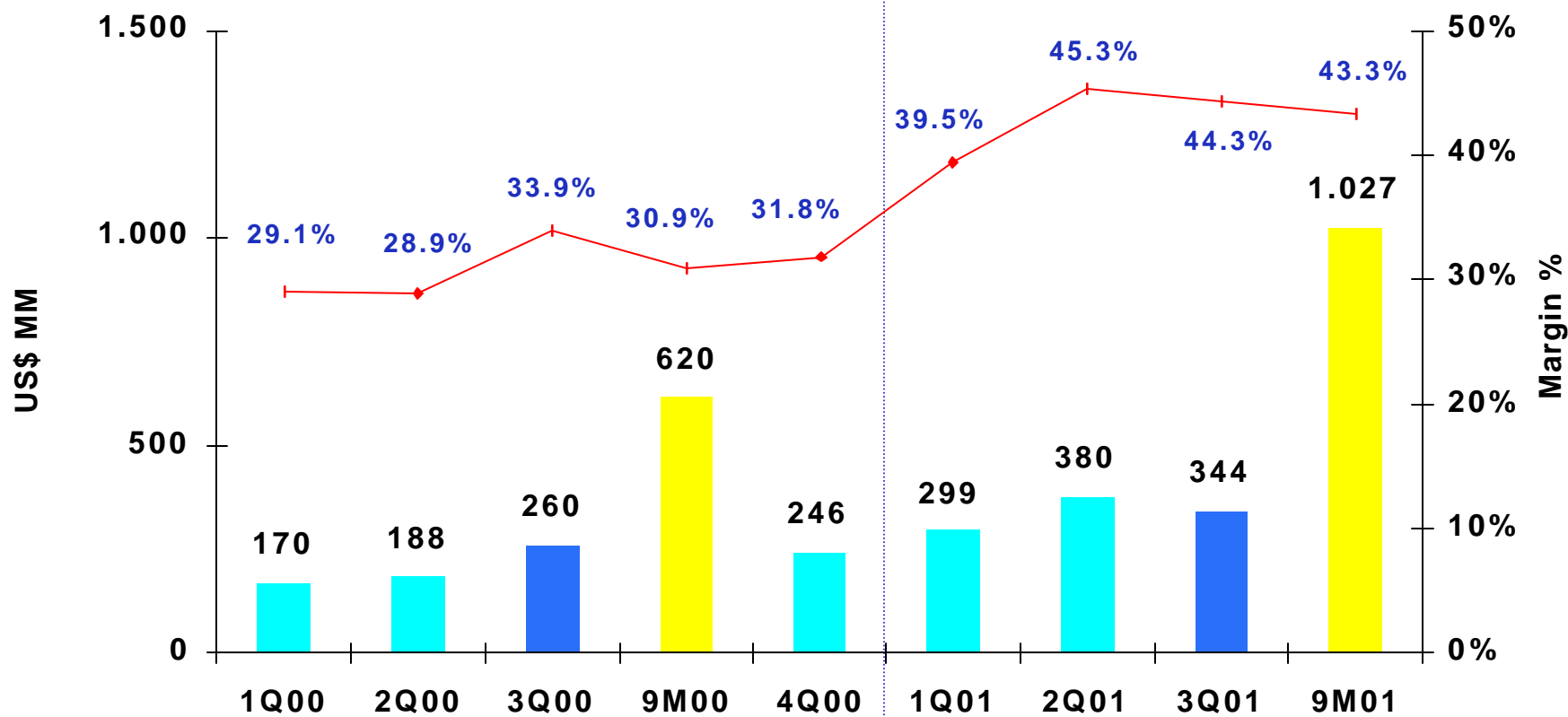


Revenue by Segment



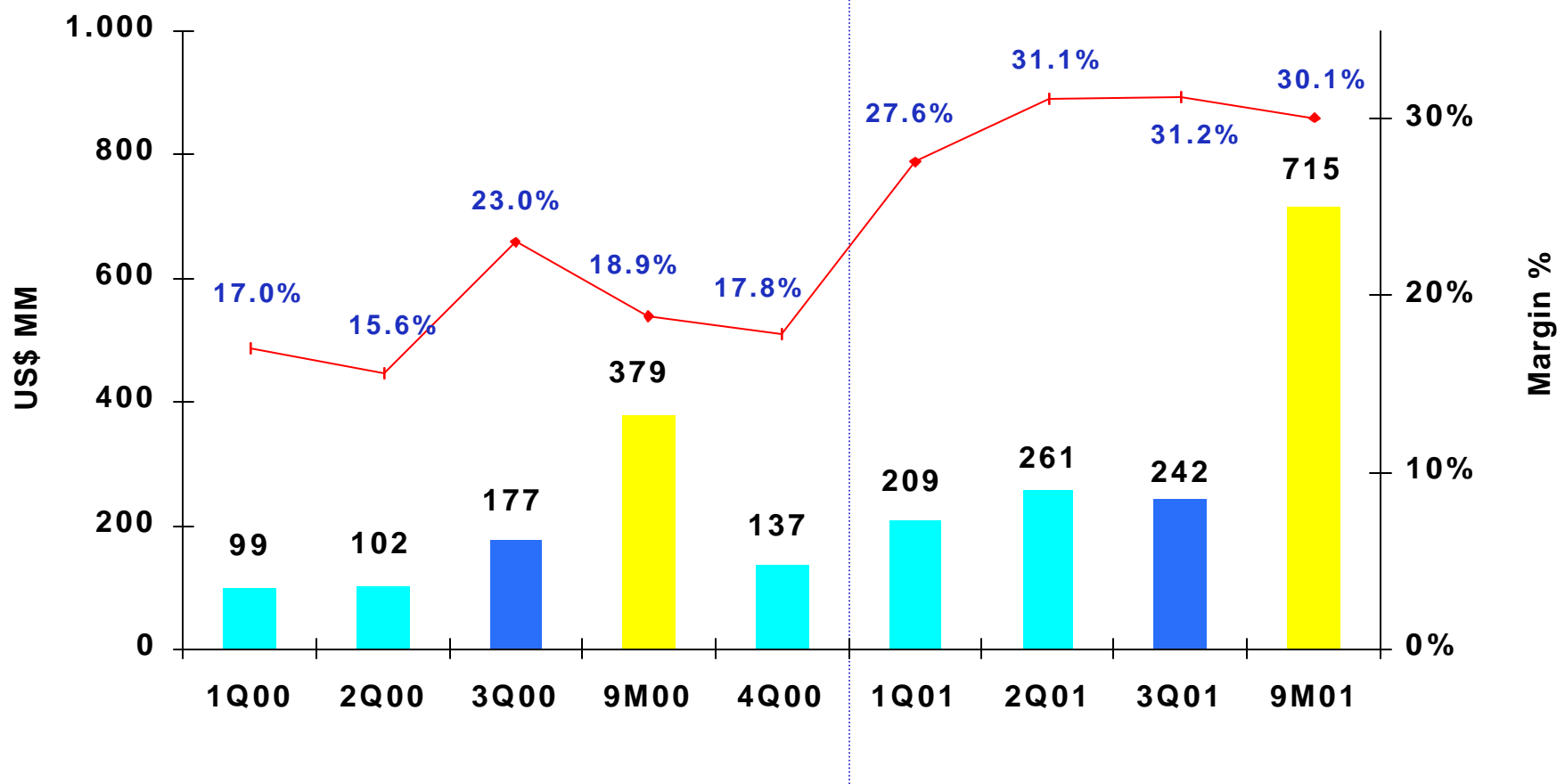
Gross Profit

US\$ Million – Corporate Law



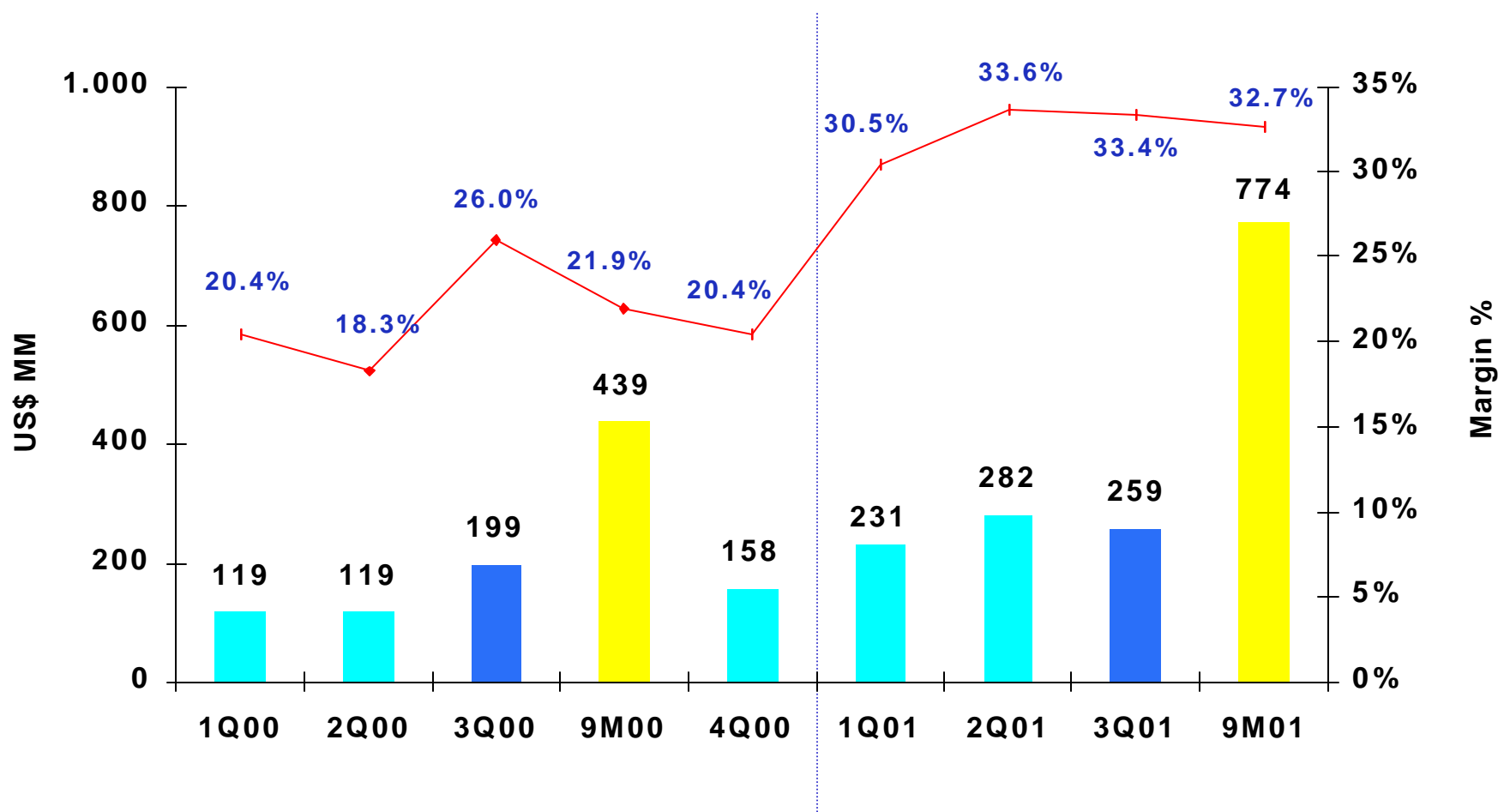
EBIT

US\$ Million – Corporate Law



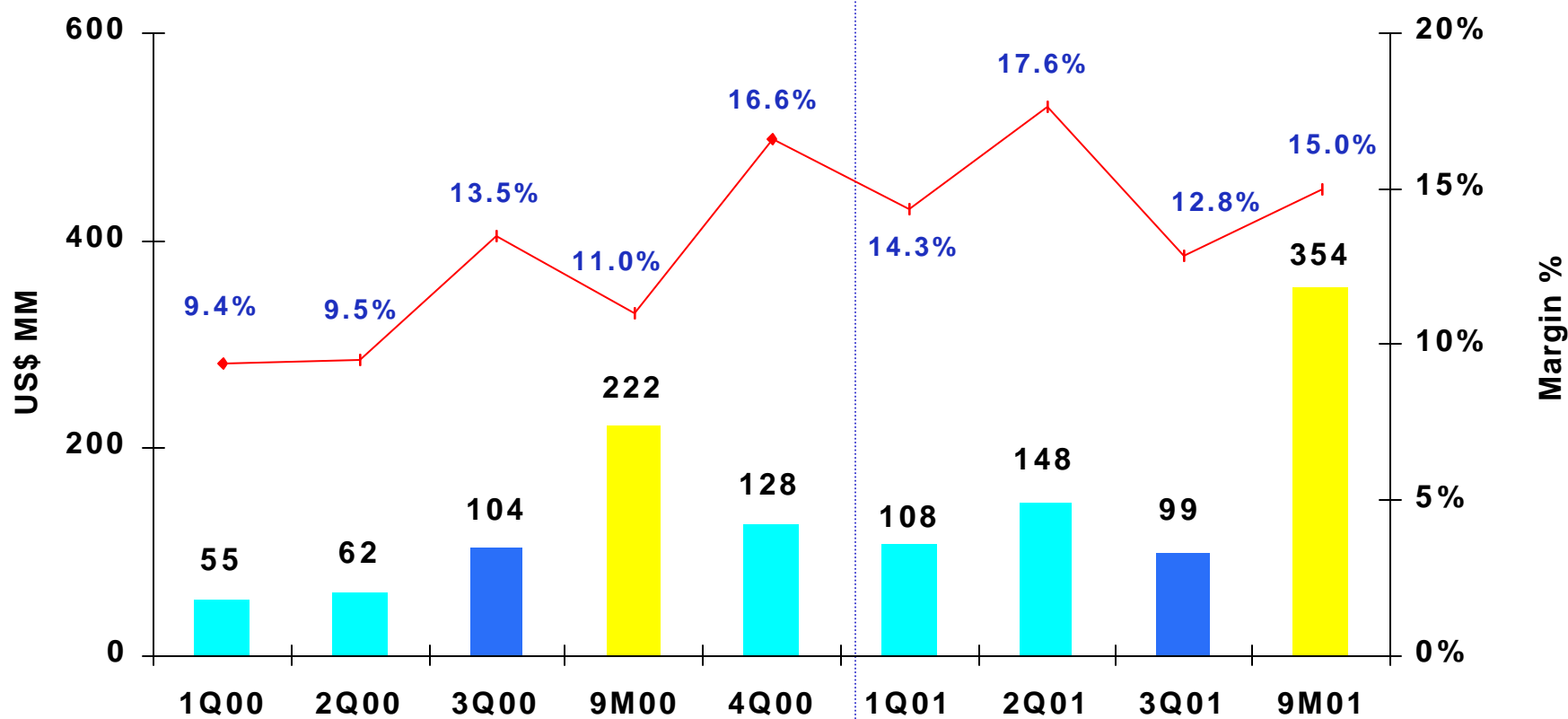
EBITDA

US\$ Million – Corporate Law



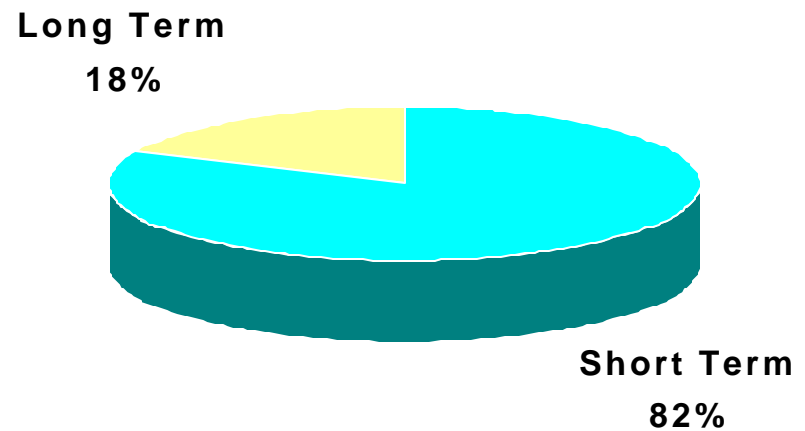
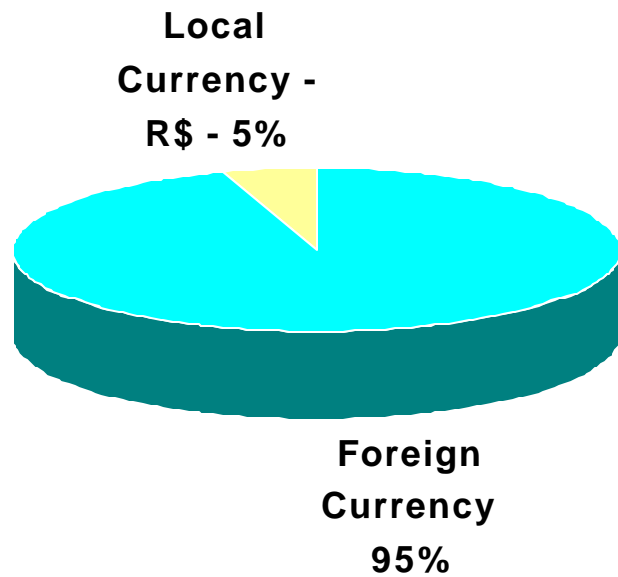
Net Income

US\$ Million – Corporate Law



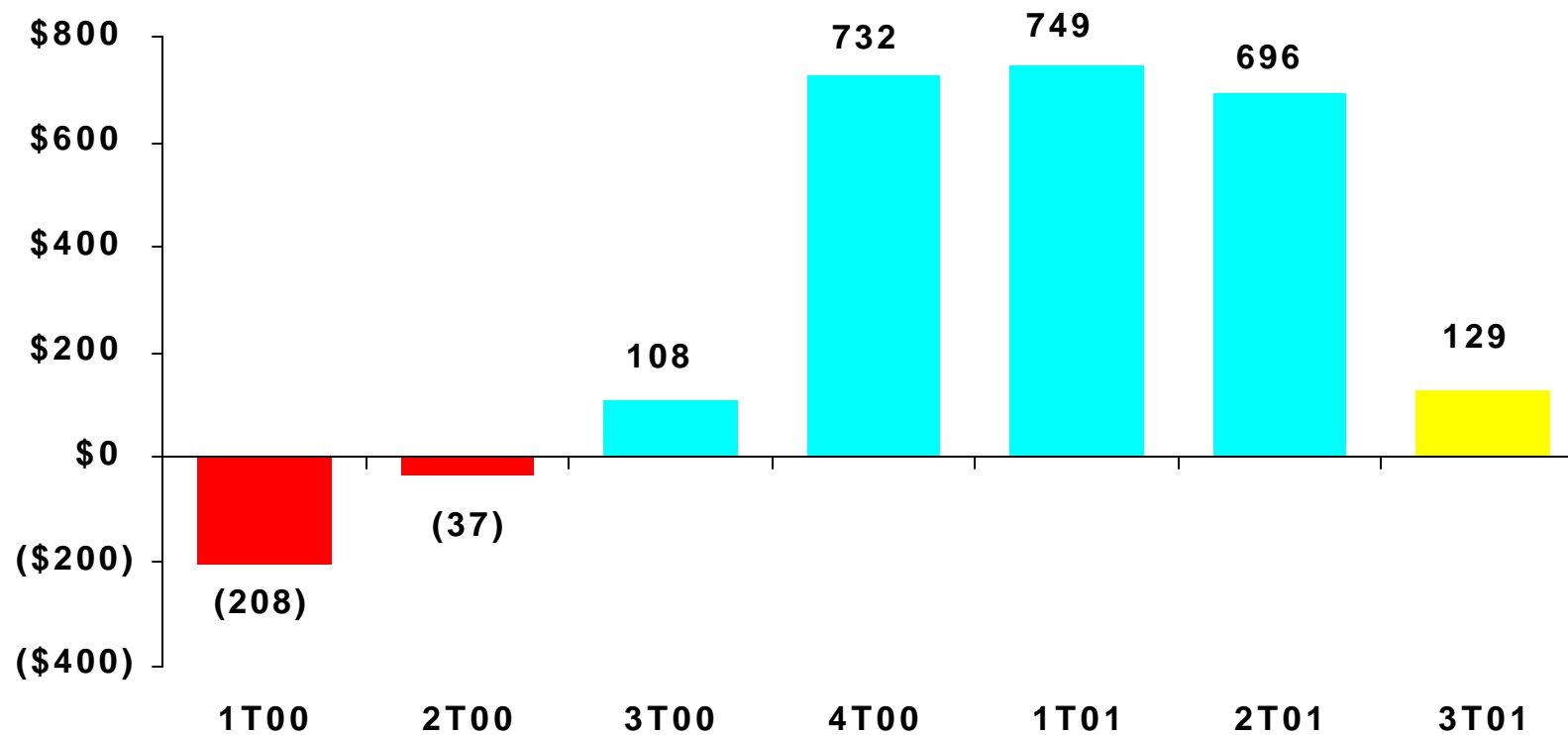
Debt Breakdown

Total Debt US\$ 754.9 Million



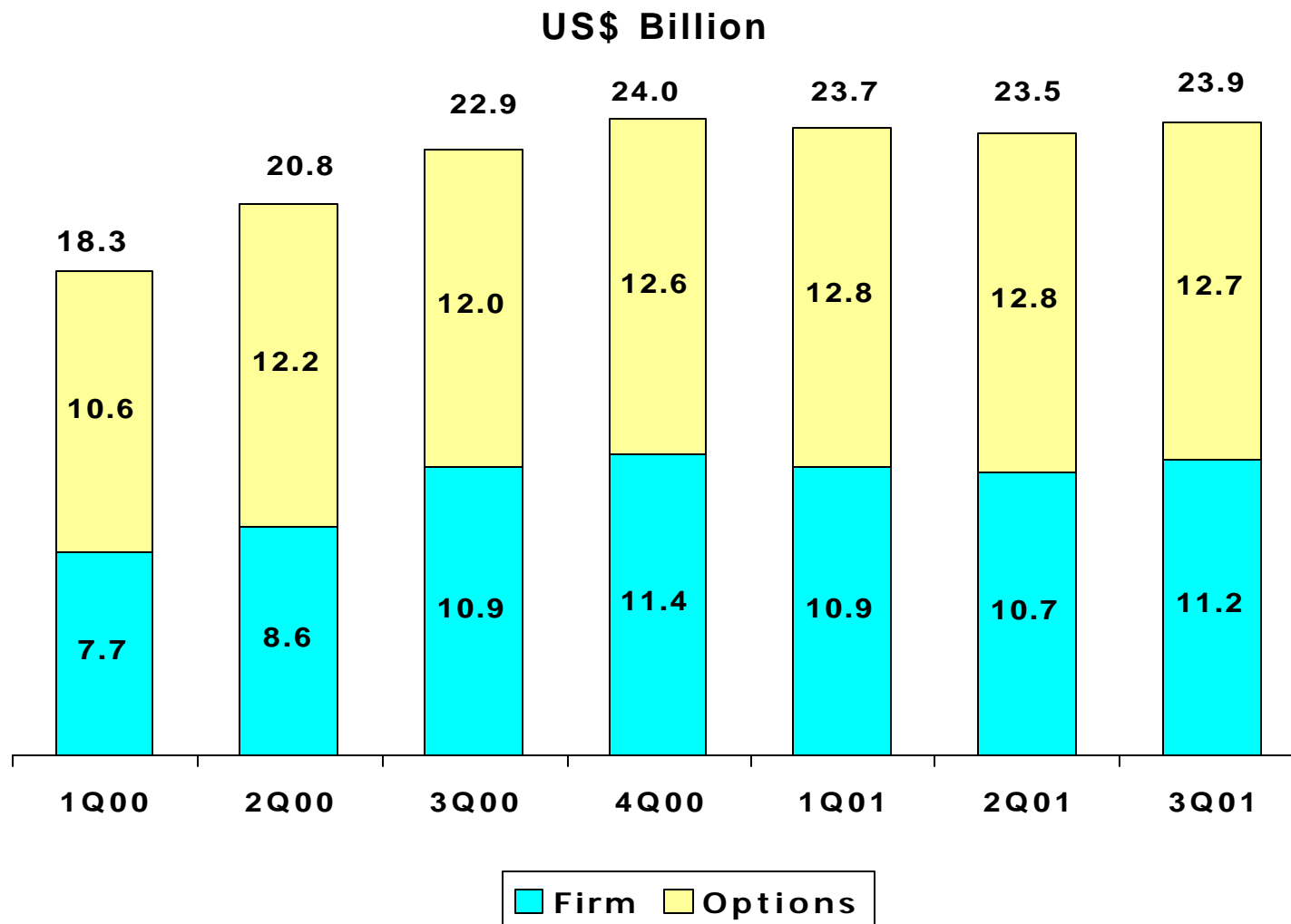
Net Cash (Debt)

US\$ Million



Backlog

US\$23.9 Billion in Total Backlog, including US\$ 11.2 Billion in Firm Backlog



Backlog Summary



	Firm Orders	Deliveries	Firm Backlog	Options
ERJ 135/140/145	859	471	388	407
Embraer 170/175/190/195	112	0	112	202
Corporate	48	5	43	44
Total Jets	1,019	476	543	653

September 2001